

THE LODGE AT KAURI CLIFFS | THE FARM AT CAPE KIDNAPPERS | MATAKAURI LODGE





KAURI CLIFFS

MATAURI BAY NEW ZEALAND

THE LODGE AT KAURI CLIFFS

MATAURI BAY, NEW ZEALAND

Bask in the breathtaking views from your luxurious suite or cottage, indulge in a massage, body treatment or personalised yoga class in the spa complex, or chill out at one of our three private beaches. Ancient kauri forests, spectacular sand dunes and the magnificent Bay of Islands are all within easy reach.

Set on 6,000 acres near Matauri Bay, Northland, the Lodge at Kauri Cliffs affords spectacular 180 degree views of the Pacific Ocean. Cape Brett and the offshore Cavalli Islands are part of the panorama that can be viewed from the verandas, living room, card room and the guest cottages.

GOLF The Par 72 championship golf course measures 7,119 yards or 6,510 metres and offers five sets of tees to challenge every skill level. Fifteen holes view the Pacific Ocean, six of which are played alongside cliffs that plunge to the sea. The golf complex includes a world class practice range, putting and chipping greens, well-stocked golf shop, and ladies' and men's locker room.

ON-SITE ACTIVITIES Hiking, golf, tennis, mountain biking, farm tour, full-service luxury spa, fitness centre, three secluded private beaches, clay pigeon shooting.

AREA ACTIVITIES Tours feature visits to: Ninety Mile Beach, Tane Mahuta (NZ's largest kauri tree), Doubtless Bay, Puketi Kauri Forest, Rainbow Falls, Historic Russell, Waitangi Treaty House.



**THE FARM
CAPE KIDNAPPERS**

HAWKE'S BAY NEW ZEALAND

THE FARM AT CAPE KIDNAPPERS

HAWKE'S BAY, NEW ZEALAND

On the exterior, the Lodge resembles a cluster of farm buildings. Local materials are incorporated into graciously scaled rooms full of natural light and unexpected treasures. Comfort and ease are at a premium, with each room taking on a character of its own while harkening back to the rural feeling of the New Zealand sheep station and wine country. Spacious cottages, each with breathtaking views, open to large porches overlooking a stunning Pacific panorama.

GOLF The par 71 championship golf course measures 7,119 yards or 6,510 meters and will challenge every skill level. Designed by Tom Doak, currently the hottest architect in golf, the course is ranked Number 27 in the world by Golf Magazine, the world's leading authority on the subject.

ACCOMMODATION Each cottage suite has room controlled air conditioning, high speed wireless internet, remote control flat screen LCD TV, DVD player, CD player with iPod connection, security safe, fully stocked mini bar, walk-in closet, spacious bathroom with heated towel rack, separate WC and shower stalls, oversized bath tub, and twin vanities. 180 degree panoramic views of the farm, golf course and Pacific Ocean are enjoyed from each suite's private balcony. Interior design is by Linda Bedell of Aspen, Colorado.

ON-SITE ACTIVITIES Golf, hiking, gannet safari, farm tour, full-service luxury spa, fitness centre, outdoor 50' heated pool, jacuzzi/spa, pool cabana.

AREA ACTIVITIES Wine tours, fly fishing, hot air ballooning, Art Deco tour, horseback riding, river kayaking.



MATAKAURI

QUEENSTOWN NEW ZEALAND

MATAKAURI LODGE

QUEENSTOWN, NEW ZEALAND

As befits the sheer magnificence of this landscape, the lodge experience that awaits you here is exceptional. Our guests will enjoy world-class dining experiences, luxurious accommodation, exemplary service and every modern amenity one could wish for. Divine cuisine from award-winning chefs and an exceptional wine selection set a world-class table at Matakauri Lodge, all served before a stunning panorama of alpine lake and rugged mountain peaks.

The main lodge presents stylish and spacious lounge, dining and living areas to relax in, all with enchanting views of Lake Wakatipu. A luxury Spa facility, infinity swimming pool and sauna with a modern fitness centre are also on-site for our guests to enjoy.

ACCOMMODATION Relax on your own private balcony, watching the colours of Lake Wakatipu and the spectacular mountain ranges change, as day turns to dusk. Along with stunning panoramic views, the suites boasts a generous bedroom with sitting area and fireplace, walk-in wardrobe and spacious bathroom with twin vanities and oversized bath tub. Styled by acclaimed interior designer Virginia Fisher, all rooms feature high speed wireless internet, fully-stocked mini-bar, room-controlled air conditioning, flat screen LCD TV, DVD player, CD player with iPod connection and security safe.

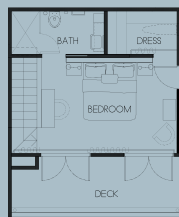
ON-SITE ACTIVITIES Luxurious spa facility, fitness centre, outdoor infinity swimming pool, sauna, jacuzzi, walking trails.

AREA ACTIVITIES Golf, horseback riding, mountain biking, fly fishing, hiking, skiing, water sports, adrenalin sports, wine tours, scenic flights.



MATAKAURI LODGE

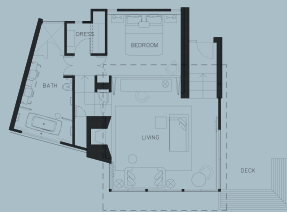
LODGE ROOM 1 room - 25 sq m / 269 sq ft
Located on the upper level of the main lodge, our lodge room offers an interconnecting option with a Deluxe Suite.



SUITE 2 outlying - 72.8 sq m / 783.6 sq ft
Superbly situated along the lake-front and just a short walk from the main lodge, these spacious suites offer their own private balconies overlooking Lake Wakatipu.

DELUXE SUITE 6 outlying and 2 within the main lodge - 76 sq m / 818 sq ft. Indicative size given as individual suite layouts vary.

These, our largest suites, have commanding views of Lake Wakatipu and the glorious snow-capped mountains. The two suites in the main lodge offer the convenience of proximity to lodge facilities.



Indicative only

LODGE ROOM	SEASON	DATES	DOUBLE	SINGLE
	HIGH	1 Nov 10 - 30 Apr 11	\$700	\$1,150
	LOW	1 May 11 - 31 Aug 11	\$595	\$895
	SHOULDER	1 Sep 11 - 30 Sep 11	\$655	\$1,105

SUITES	SEASON	DATES	DOUBLE	SINGLE
	HIGH	1 Nov 10 - 30 Apr 11	\$950	\$1,435
	LOW	1 May 11 - 31 Aug 11	\$620	\$920
	SHOULDER	1 Sep 11 - 30 Sep 11	\$840	\$1,250

DELUXE SUITE	SEASON	DATES	DOUBLE	SINGLE
	HIGH	1 Nov 10 - 30 Apr 11	\$1,080	\$1,750
	LOW	1 May 11 - 31 Aug 11	\$720	\$1,150
	SHOULDER	1 Sep 11 - 30 Sep 11	\$980	\$1,535

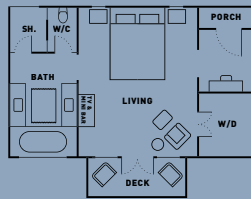
Please Note: Tariff includes accommodation, pre-dinner drinks with hors d'oeuvres, dinner, full breakfast, complimentary mini-bar including domestic beers (excludes liquor and wine) and use of all lodge facilities excluding spa treatments. Rates are quoted on a per person, per night basis. All rates are quoted in New Zealand dollars and exclude 15% Government Goods & Services Tax. A holiday season surcharge of NZD \$200.00 (per person, per night) applies to guests staying 23 Dec 2010 - 5 Jan 2011. This surcharge is non-commissionable. A two night minimum stay applies over the high season (15 December 2010 - 31 March 2011).



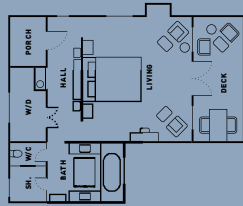


THE FARM AT CAPE KIDNAPPERS

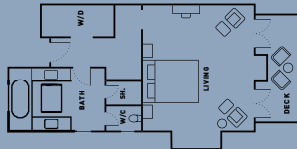
HILLTOP SUITE 10 suites - 500 sq ft / 46.5 sq m
 Situated on top of the hill above the Lodge, offering comfort and spectacular vistas. Two Hilltop Suites have the option to add an interconnecting second smaller bedroom.



RIDGE SUITE 8 suites - 683 sq ft / 63 sq m
 Situated atop the skyline ridge to the southwest of, and a short walk from, the Lodge. Spacious, comfortable and private with fireplaces and full (wet) mini-bars.



LODGE SUITE 4 large suites - 708 sq ft / 65 sq m
 Our largest suites, located inside the Lodge building, offering the convenience of proximity to lodge facilities, full (wet) mini-bars.



OWNER'S COTTAGE
 Four deluxe bedrooms with fireplaces, large bathrooms, walk-in closets and private balconies, large living room with stone fireplace, open kitchen and dining area, 2 small sitting rooms with fireplaces, TVs and comfortable seating, entrance foyer, powder room, stone terrace and outdoor jacuzzi. Can be rented as a 2 bedroom or 4 bedroom house (floor plan available on request).

Maximum Occupancy - 2 Bedroom Suite - 4pax,
 2 Bedroom House - 4pax, 4 Bedroom House - 8pax

HILLTOP SUITE/ROOM

SEASON	DATES	SUITE		ROOM	
		DOUBLE	SINGLE	DOUBLE	SINGLE
HIGH	15 Dec 10 - 31 Mar 11	\$890	\$1,435	\$525	\$735
SHOULDER	1 Apr 11 - 30 Apr 11	\$740	\$1,095	\$500	\$650
LOW	1 May 11 - 31 Aug 11	\$620	\$920	\$320	\$400
SHOULDER	1 Sep 11 - 30 Sep 11	\$815	\$1,205	\$550	\$715

LODGE/RIDGE SUITES

SEASON	DATES	DOUBLE	SINGLE
HIGH	15 Dec 10 - 31 Mar 11	\$1,190	\$1,850
SHOULDER	1 Apr 11 - 30 Apr 11	\$890	\$1,395
LOW	1 May 11 - 31 Aug 11	\$720	\$1,150
SHOULDER	1 Sep 11 - 30 Sep 11	\$980	\$1,535

OWNERS COTTAGE

SEASON	DATES	2 BDRM SUITE	2 BDRM HOUSE	4 BDRM HOUSE
HIGH	15 Dec 10 - 31 Mar 11	\$5,500	\$8,750	\$12,500
SHOULDER	1 Apr 11 - 30 Apr 11	\$3,900	\$5,500	\$8,500
LOW	1 May 11 - 31 Aug 11	\$3,900	\$5,500	\$8,500
SHOULDER	1 Sep 11 - 30 Sep 11	\$6,050	\$9,625	\$13,750

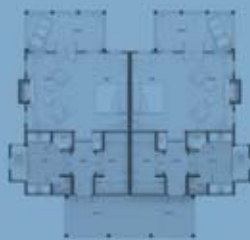
Please Note: Tariff includes accommodation, pre-dinner drinks with hors d'oeuvres, a la carte dinner, full breakfast, complimentary mini-bar including domestic beers (excludes liquor and wine) and use of all lodge facilities excluding golf and spa treatments. Rates are quoted on a per person, per night basis (excludes Owner's Cottage). All rates are quoted in New Zealand dollars and exclude 15% Government Goods & Services Tax. A holiday season surcharge of NZD \$200.00 (per person, per night) applies to guests staying 23 December 2010 - 5 January 2011. This surcharge is non-commissionable.





THE LODGE AT KAURI CLIFFS

SUITE 6 Suites - 601 sq ft / 55.9 sq m
Located down a meandering path and overlooking the golf course and Pacific Ocean. Each Suite has a comfortable bedroom with sitting area and open fireplace, full (wet) mini-bar, ensuite bathroom with twin vanities, oversized bathtub, separate shower & WC, walk-in closet and balcony.



DELUXE SUITE 16 Suites - 750 sq ft / 69.7 sq m
Set away from the main lodge and on the edge of a native totara forest overlooking the golf course and Pacific Ocean. The Deluxe Suites offer a spacious bedroom with sitting area and fireplace, opening out to a large private balcony.

Spacious bathrooms with twin vanities, oversized bathtub, separate shower and WC plus the walk in 'his & hers' closet and full (wet) mini-bar ensure guest comfort. Two of the Deluxe Suites offer the option to reserve an interconnecting smaller second bedroom (security room).

OWNER'S COTTAGE** 4,200 sq ft / 390 sq m
Large two-suite house positioned with main lounge and two bedrooms overlooking ocean and golf course toward Bay of Islands, infinity swimming pool and hot tub, outdoor barbecue and cooking facilities for chef if private in-house dining is preferred, open fireplaces in bedrooms and main lounge, powder room and study.



**Maximum Occupancy - 4pax

SUITES	SEASON	DATES	DOUBLE	SINGLE
	HIGH	15 Dec 10 - 31 Mar 11	\$990	\$1,575
SHOULDER	1 Apr 11 - 30 Apr 11	\$760	\$1,135	
LOW	1 May 11 - 31 Aug 11	\$620	\$920	
SHOULDER	1 Sep 11 - 30 Sep 11	\$840	\$1,250	

DELUXE SUITE/ SECURITY ROOM*	SEASON	DATES	DELUXE SUITE		SECURITY ROOM	
			DOUBLE	SINGLE	DOUBLE	SINGLE
HIGH	15 Dec 10 - 31 Mar 11	\$1,190	\$1,850	\$525	\$735	
SHOULDER	1 Apr 11 - 30 Apr 11	\$890	\$1,395	\$500	\$650	
LOW	1 May 11 - 31 Aug 11	\$720	\$1,150	\$320	\$400	
SHOULDER	1 Sep 11 - 30 Sep 11	\$980	\$1,535	\$550	\$715	

*Must be booked in conjunction with Deluxe Suite.

OWNER'S COTTAGE	SEASON	DATES	2 BDRM HOUSE
	HIGH	15 Dec 10 - 31 Mar 11	\$8,750
SHOULDER	1 Apr 11 - 30 Apr 11	\$5,500	
LOW	1 May 11 - 31 Aug 11	\$5,500	
SHOULDER	1 Sep 11 - 30 Sep 11	\$9,625	

Please Note: Tariff includes accommodation, pre-dinner drinks with hors d'oeuvres, a la carte dinner, full breakfast, complimentary mini-bar including domestic beers (excludes liquor and wine) and use of all lodge facilities excluding golf and spa treatments. Rates are quoted on a per person, per night basis (excludes Owner's Cottage). All rates are quoted in New Zealand dollars and exclude 15% Government Goods & Services Tax. A holiday season surcharge of NZD \$200.00 (per person, per night) applies to guests staying 23 December 2010 - 5 January 2011. This surcharge is non-commissionable. A two night minimum stay applies over the high season (15 December 2010 - 31 March 2011).





GETTING TO KAURI CLIFFS

FROM AUCKLAND

- Scheduled plane flights to Kerikeri are available daily, and take 45 minutes (via Auckland).
- By helicopter it is 1 hour and 5 minutes direct to the Lodge.
- By car allow 4 hours.

FROM CAPE KIDNAPPERS

- Scheduled plane flights depart Napier daily and are under 2 hours to Kerikeri (via Auckland).
- By helicopter it is 3 hours direct to the Lodge.



KAURI CLIFFS
MATAURI BAY NEW ZEALAND

Contact Kauri Cliffs

Kerry Molloy - General Manager
Tepene Tabelands Rd,
Matauri Bay, Northland
PO Box 800, Kerikeri, 0245,
New Zealand
Tel: +64 9 407 0010
Fax: +64 9 407 0061
email: reservations@kauricliffs.com



GETTING TO CAPE KIDNAPPERS

FROM AUCKLAND

- Scheduled plane flights to Napier are available daily and take 55 minutes.
- By helicopter it is 1 hour 45 minutes.
- By car allow 6 hours.

FROM WELLINGTON

- Scheduled plane flights to Napier are available daily and take 50 minutes.
- By helicopter it is 1 hour 20 minutes.
- By car allow 4 hours.

FROM TAUPO

- By Helicopter is 45 minutes.
- By car allow 2hrs 30minutes.

FROM KAURI CLIFFS

- Scheduled plane flights depart Kerikeri daily and take under 2 hours to Napier (via Auckland).
- By helicopter it is 3 hours direct to the Lodge.



Contact Cape Kidnappers

Julia Carlsen - Lodge Manager
446 Clifton Road,
Te Awanga, Hawke's Bay,
PO Box 8850, Havelock North, 4157,
New Zealand
Tel: +64 6 875 1900
Fax: +64 6 875 1901
email: reservations@capekidnappers.com



GETTING TO QUEENSTOWN

Air New Zealand, Jet Star and Qantas operate daily flights to Queenstown from Auckland, Wellington and Christchurch. If travelling from Australia, direct services are available from Sydney, Brisbane and Melbourne. Charter flights may also be organised and Matakauri Lodge will meet your flight upon request.

GETTING TO MATAKAURI

Twenty minutes from Queenstown Airport and just seven minutes from downtown Queenstown, Matakauri Lodge is superbly located on Lake Wakatipu.



MATAKAURI
QUEENSTOWN NEW ZEALAND

Contact Matakauri

Jay Robertson - General Manager
569 Glenorchy Road, Queenstown
PO Box 888, Queenstown, 9348
New Zealand
Tel: +64 3 441 1008
Fax: +64 3 441 2180
email: reservations@matakaurilodge.com

